



GWC White Paper:

Optimizing Cross-Border Logistics for
Saudi Arabia's Giga Projects



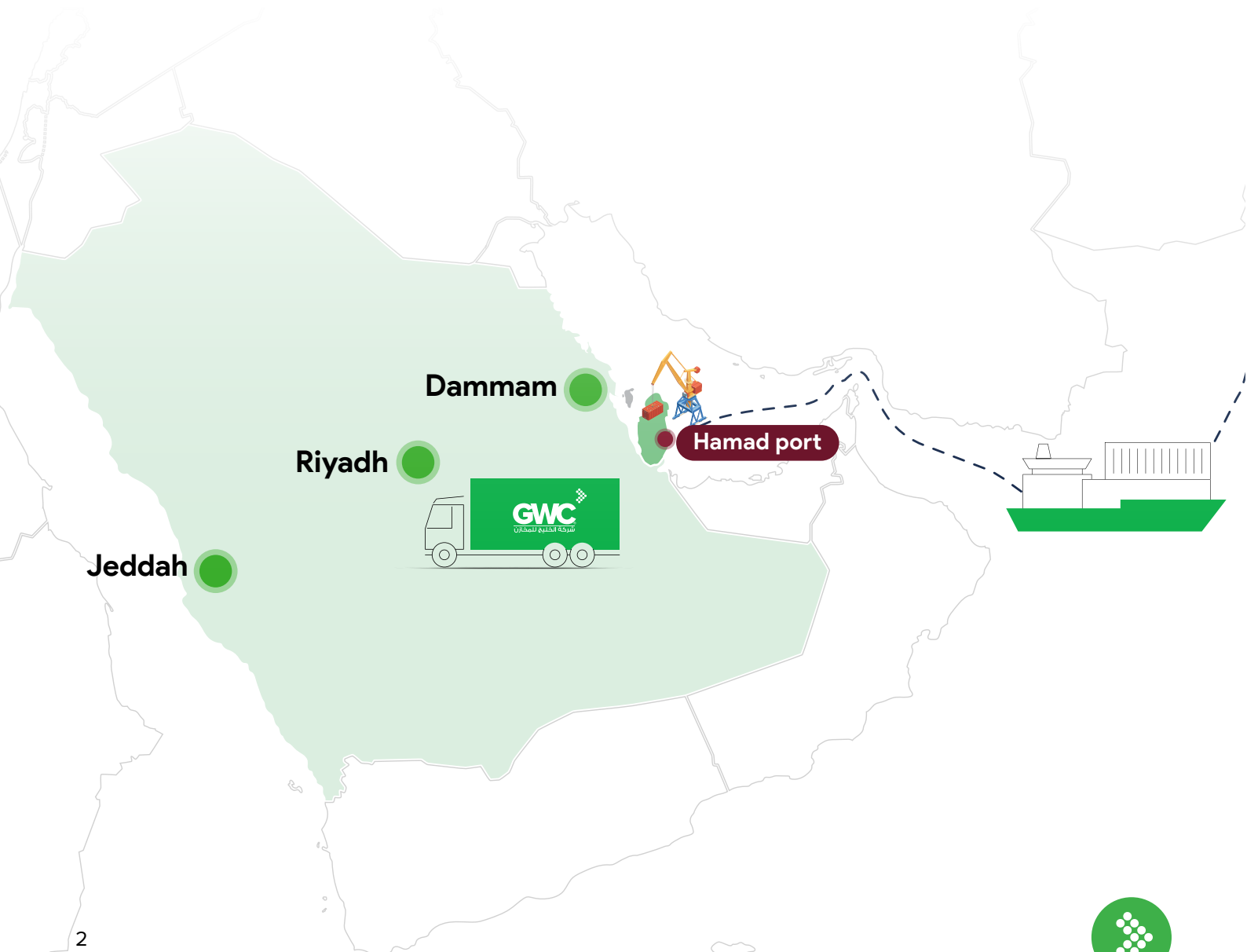
Executive Summary

Saudi Arabia is building the future - from NEOM and Red Sea Global to Qiddiya City and Diriyah Gate. These giga-projects demand a logistics ecosystem that's not only reliable but also fast, scalable, and regionally integrated. **Flow Port** Qatar, a new initiative from leading logistics provider GWC, has been purpose-built to support this transformation and enhance the efficiency, reliability, and economic viability of freight movement between East Asia and the GCC region.

It offers a faster, smarter, more reliable and economically viable trade route from East Asia into the Kingdom - designed specifically to meet the high-volume, time-sensitive needs of Saudi Arabia's giga-projects.

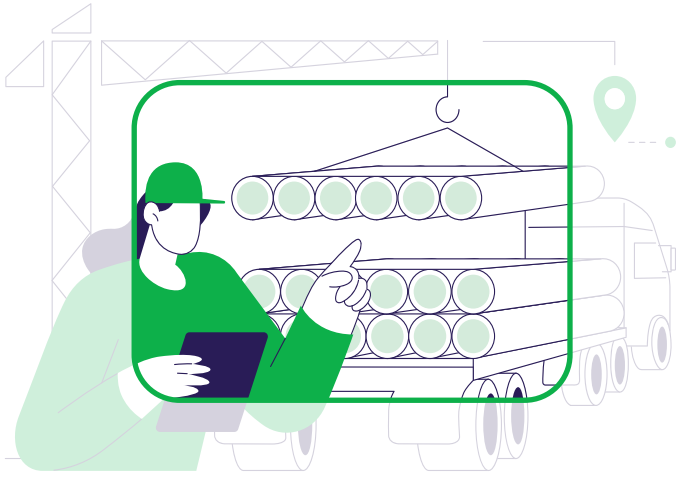
At the core of the solution is Hamad Port in Qatar, serving as a powerful gateway to streamline re-export logistics into Saudi Arabia.

This white paper explains the rationale behind this new strategic initiative to project developers, procurement heads, government partners, and logistics planners and re-exporters who are powering the Kingdom's Vision 2030.



Built for the Pace of Giga-Projects

Global trade patterns are shifting rapidly, shaped by supply chain disruptions, geopolitical changes, and rising customer expectations. The traditional freight route from China to Saudi Arabia - typically passing through Jeddah or Dammam ports - have made it evidently challenging to be handled with the existing capacities. These challenges are particularly



costly for giga projects that rely on tight construction timelines and seamless global supply chains.

With dozens of giga-projects SET to inject trillions into Saudi Arabia's economy by 2030, delivery timelines are ambitious. In such a high-stakes environment, every moment counts - and delays in equipment delivery can mean the difference between staying on track or falling short of transformative goals.

In response, GWC's **Flow Port** Qatar offers a faster, economical alternative by routing goods from China and other key markets through Qatar's Hamad Port and Ras Bufontas Freezone, then transporting them directly into Saudi Arabia by road.

This optimized model gives developers greater control over timelines, costs, and inventory readiness—reducing delays, avoiding costly downtime, and keeping complex projects on track.

Why Qatar Works for Saudi Projects

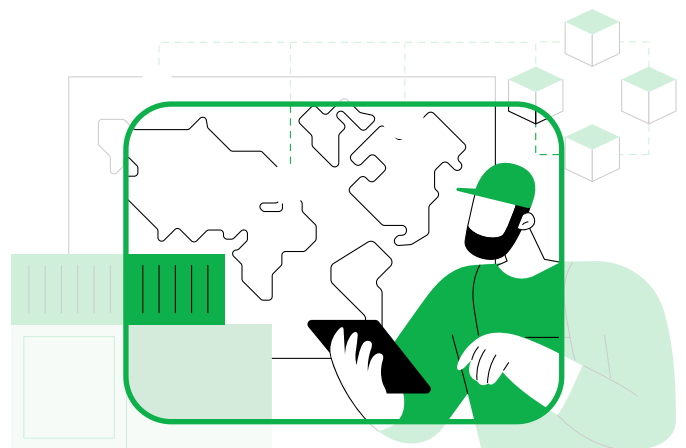
Qatar is strategically situated between major Asian manufacturing hubs and the rapidly expanding economies of the GCC. **Flow Port** Qatar proposes a logistics model that capitalizes on this location to serve both as a transit hub and as a regional distribution center. For stakeholders building the Kingdom's giga-projects, Qatar offers:

Seamless Cross-Border Logistics from Qatar to Saudi Giga-projects.

- **Infrastructure Readiness:** Hamad Port is among the most technologically advanced in the GCC, offering automated container handling, smart logistics systems, and digital customs procedures.
- **A Supportive Regulatory Environment:** Qatar's trade regulations support efficient customs clearance, bonded warehousing, and integration with the GCC Customs Union, enabling smoother cross-border trade.
- **Free Zone Accessibility:** Proximity to economic zones like Ras Bufontas facilitates value-added

logistics operations such as cross-docking, assembly, and repackaging under favorable tax and regulatory conditions.

- **Geopolitical Stability:** Qatar's stable policy environment and commitment to economic diversification further strengthen its appeal as a long-term logistics hub.

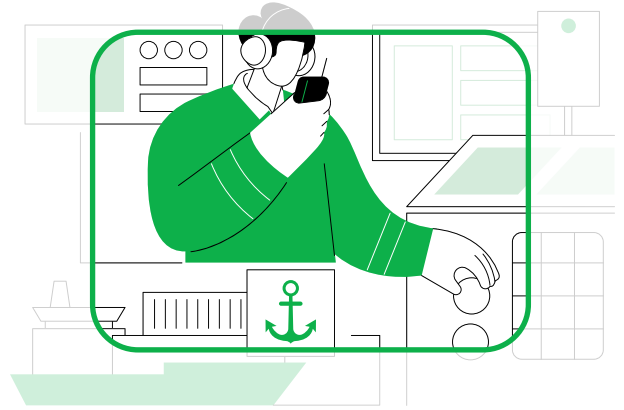


What Flow Port Delivers

Flow Port is built with the complexity of giga-projects in mind. Whether moving steel, modular units, mechanical, electrical and plumbing materials, or retail goods, the system supports high-speed, high-volume re-export across multiple formats:

- **C2C & C2FB (Container to Container / Flatbed):** Direct transfer of containerized goods across the Saudi border—ideal for building materials, prefab units, and machinery.
- **LL2C & LL2FB (Loose Load to Container / Flatbed):** Consolidation services for fragmented shipments that need cross-docking and strategic staging.
- **Just-in-Stock Replenishment:** Keep fast-moving or critical items within hours of the project site, ready to deploy without customs holdups.

This makes **Flow Port** a preferred choice for logistics managers working on giga-projects with strict milestone deadlines and phased delivery needs.



Supporting Both Sides of the Supply Chain

Flow Port improves efficiency for both exporters and Saudi recipients. Chinese manufacturers and suppliers gain quicker access to the Saudi market. On the ground, Saudi project stakeholders benefit from:

- Predictable inventory flows
- Reduced customs and port delays
- Simplified tracking and delivery logistics

Qatar's geographic position allows goods to move from sea to road quickly, with the Abu Samra border serving as a fast-track entry point into the Kingdom. It creates a seamless re-export corridor from East Asia into Saudi Arabia's largest development zones.

Launch Timeline

Flow Port Qatar will launch its minimum viable product in Q2 2025, starting at Ras Bufontas Free Zone with scalable services rolling out through late 2025. The offering will be priced flexibly - so clients can pay only for what they use: from repackaging and storage to urgent transport and clearance support.

Shaping the Future of Gulf Logistics

As Saudi Arabia's giga projects progress into advanced phases of development, supply chain agility will become even more essential. **Flow Port** is a purpose-built model to serve the scale, urgency, and complexity of giga-projects.

By avoiding chokepoints, reducing handling, and ensuring smoother customs experiences, **Flow Port** aims to set a new benchmark for regional logistics.

It offers project stakeholders a better way to build - with fewer delays and more transparency.

The Logistics Partner for Vision 2030

GWC Flow Port is tailor-made for the logistical demands of Saudi Arabia's national transformation. Its geography, advanced infrastructure, and flexible service design to deliver what giga-projects need most: reliability, speed, and control.

For developers, suppliers, and government agencies driving the Kingdom's next decade of growth, **Flow Port** offers not just a logistics service - but a critical enabler of success.



GWC FLOW PORT

seamless. economical. fast

www.gwclogistics.com